

EKL 2x8s (ABBEY ROAD)



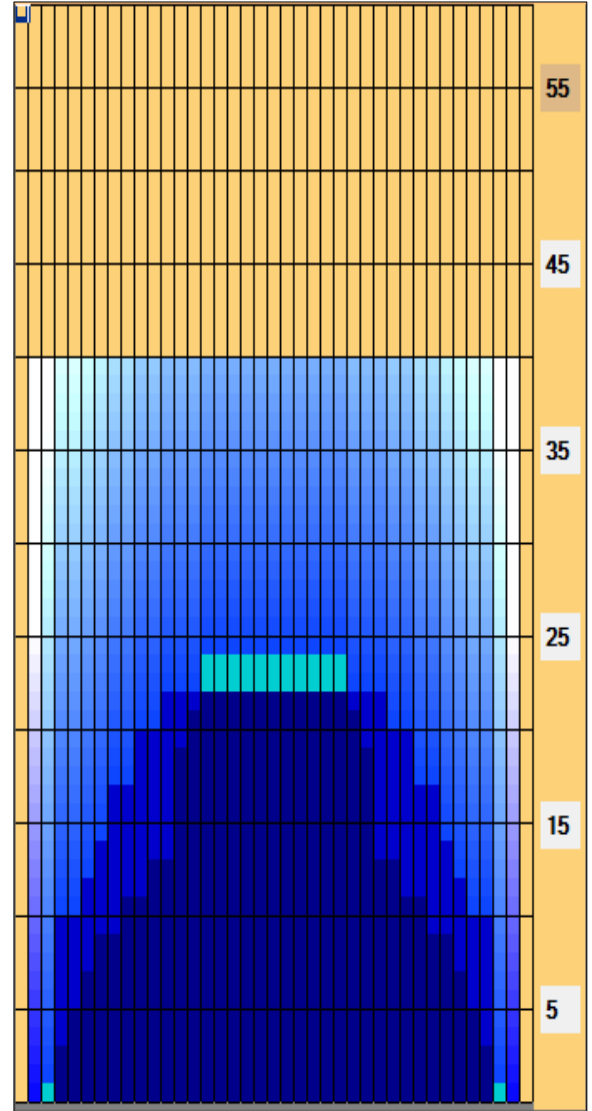
Oil Pattern Distance: 40 Feet **Reverse Brush Drop:** 40 Feet **Oil Per Board:** 50 uL
Forward Oil Total: 14.3 mL **Reverse Oil Total:** 7.6 mL **Volume Oil Total:** 21.9 mL
Forward Boards Crossed: 286 Boards **Reverse Boards Crossed:** 152 Boards **Total Boards Crossed:** 438 Boards

	Start	Stop	Loads	Speed	Crossed	Start	End	Feet	T.Oil
1	3L	3R	2	14	70	0.0	1.9	1.9	3500
2	4L	4R	1	14	33	1.9	3.8	1.9	1650
3	5L	5R	1	14	31	3.8	5.7	1.9	1550
4	6L	6R	1	14	29	5.7	7.6	1.9	1450
5	7L	7R	1	14	27	7.6	9.5	1.9	1350
6	9L	9R	1	14	23	9.5	11.4	1.9	1150
7	11L	11R	1	18	19	11.4	13.9	2.5	950
8	13L	13R	2	18	30	13.9	19.0	5.1	1500
9	14L	14R	1	18	13	19.0	21.5	2.5	650
10	15L	15R	1	18	11	21.5	24.0	2.5	550
11	2L	2R	0	18	0	24.0	31.0	7.0	0
12	2L	2R	0	26	0	31.0	40.0	9.0	0

	Start	Stop	Loads	Speed	Crossed	Start	End	Feet	T.Oil
1	2L	2R	0	30	0	40.0	22.0	-18.0	0
2	12L	12R	1	18	17	22.0	19.5	-2.5	850
3	10L	10R	1	18	21	19.5	17.0	-2.5	1050
4	8L	8R	1	18	25	17.0	14.5	-2.5	1250
5	7L	7R	1	18	27	14.5	12.0	-2.5	1350
6	6L	6R	1	14	29	12.0	10.1	-1.9	1450
7	4L	4R	1	14	33	10.1	8.2	-1.9	1650
8	2L	2R	0	14	0	8.2	0.0	-8.2	0

Conditioner:
 Type In or Select One
 TransferType:
 Type In or Select One

- Forward
- Reverse
- Combined
- Buff



<p> Reverse Drop Brush 34'. Download PDF for full description.</p>

Item	3L-7L:18L-18R	8L-12L:18L-18R	13L-17L:18L-18R	18L-18R:17R-13R	18L-18R:12R-8R	18L-18R:7R-3R
Description	Outside Track:Middle	Middle Track:Middle	Inside Track:Middle	Middle: Inside Track	Middle:Middle Track	Middle:Outside Track
Track Zone Ratio	3.33	1.5	1.03	1.03	1.5	3.33

